

SUPERIOR CARPORTS, INC.



(Photo shown with extra options)

Truss Style #1

TRIPLE WIDE CARPORTS



CALL YOUR DEALER
TEL. _____

Not all structures meet codes. Engineering is at additional cost.



(Photo shown with extra options)

Truss Style #2

**WE ACCEPT ALL
MAJOR CREDIT CARDS**

**NOTE: FRAME IS 1 FT. SHORTER
THAN ROOF LENGTH WISE**

**Prices are for top with open sides only.
For other options, turn brochure over.**

**LONGER SIZES AND
CUSTOM SIZES AVAILABLE**

**Standard 6' Leg Ht.
Reg. Style, A-Frame & Vertical**

**We recommend Vertical Roof on
any units past 31 ft. in Length.**

REGULAR STYLE	W	L	W	L	W	L	W	L	W	L	W	L	W	L
	26 X 21	\$1995.00	26 X 26	\$2470.00	26 X 31	\$2945.00	26 X 36	\$3520.00	26 X 41	\$4195.00	26 X 46	\$4570.00	26 X 51	\$5045.00
28 X 21	\$2095.00	28 X 26	\$2670.00	28 X 31	\$3245.00	28 X 36	\$3820.00	28 X 41	\$4395.00	28 X 46	\$4770.00	28 X 51	\$5245.00	
30 X 21	\$2195.00	30 X 26	\$2770.00	30 X 31	\$3345.00	30 X 36	\$4020.00	30 X 41	\$4595.00	30 X 46	\$5070.00	30 X 51	\$5645.00	
A-FRAME STYLE	+\$100.00		+\$125.00		+\$150.00		+\$175.00		+\$200.00		+\$225.00		+\$250.00	
VERTICAL STYLE	+\$400.00		+\$500.00		+\$600.00		+\$700.00		+\$800.00		+\$900.00		+\$1000.00	

OPTION LIST

SUPERIOR CARPORTS, INC.

A QUALITY PRODUCT

LENGTH	21' LONG	26' LONG	31' LONG	36' LONG	41' LONG	46' LONG	51' LONG
2 1/4" 12 GA FRAMING	\$ 300.00	\$ 400.00	\$ 500.00	\$ 600.00	\$ 700.00	\$ 800.00	\$ 900.00
Style Truss #1	STANDARD	STANDARD	STANDARD	STANDARD	STANDARD	STANDARD	STANDARD
Style Truss #2	STANDARD	STANDARD	STANDARD	STANDARD	STANDARD	STANDARD	STANDARD
Style Truss #3	\$ 150.00	\$ 200.00	\$ 250.00	\$ 300.00	\$ 350.00	\$ 400.00	\$ 450.00

Roof Style - See Front for Charges

HEIGHT

Leg Height	21' Long	26' Long	31' Long	36' Long	41' Long	46' Long	51' Long
7 Feet	\$90.00	\$110.00	\$125.00	\$150.00	\$170.00	\$195.00	\$210.00
8 Feet	\$180.00	\$220.00	\$250.00	\$300.00	\$340.00	\$390.00	\$420.00
9 Feet	\$270.00	\$330.00	\$375.00	\$450.00	\$510.00	\$585.00	\$630.00
10 Feet	\$360.00	\$440.00	\$500.00	\$600.00	\$680.00	\$780.00	\$840.00
11 Feet	\$450.00	\$550.00	\$625.00	\$750.00	\$850.00	\$975.00	\$1050.00
12 Feet	\$540.00	\$660.00	\$750.00	\$900.00	\$1020.00	\$1170.00	\$1260.00

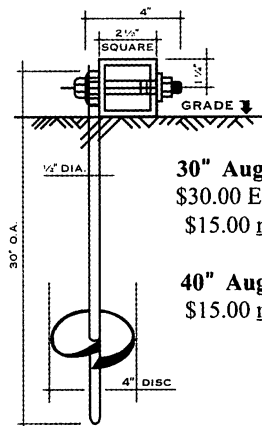
(HORIZONTAL) BOTH SIDES CLOSED

Leg Height	21' Long	26' Long	31' Long	36' Long	41' Long	46' Long	51' Long
6 Feet	\$325.00	\$410.00	\$495.00	\$580.00	\$665.00	\$735.00	\$835.00
7 Feet	\$375.00	\$470.00	\$565.00	\$660.00	\$755.00	\$850.00	\$945.00
8 Feet	\$425.00	\$555.00	\$660.00	\$765.00	\$870.00	\$980.00	\$1110.00
9 Feet	\$475.00	\$590.00	\$705.00	\$820.00	\$935.00	\$1065.00	\$1180.00
10 Feet	\$525.00	\$655.00	\$785.00	\$915.00	\$1045.00	\$1185.00	\$1335.00
11 Feet	\$600.00	\$745.00	\$890.00	\$1035.00	\$1180.00	\$1345.00	\$1495.00
12 Feet	\$625.00	\$785.00	\$945.00	\$1105.00	\$1265.00	\$1425.00	\$1585.00

(HORIZONTAL) EACH END CLOSED

Leg Height	26' Wide	28' Wide	30' Wide
6 Feet	\$950.00	\$1065.00	\$1180.00
7 Feet	\$1025.00	\$1145.00	\$1265.00
8 Feet	\$1100.00	\$1225.00	\$1350.00
9 Feet	\$1175.00	\$1305.00	\$1435.00
10 Feet	\$1250.00	\$1385.00	\$1520.00
11 Feet	\$1325.00	\$1465.00	\$1605.00
12 Feet	\$1400.00	\$1545.00	\$1690.00

EXTRAS



30" Augers for Dirt
\$30.00 Each installed
\$15.00 not installed

40" Augers For Dirt
\$15.00 not installed

ROLL UP DOORS

All Doors In White

W X H	Price
6 X 6	\$315.00
6 X 7	\$325.00
8 X 6	\$340.00
8 X 7	\$350.00
8 X 8	\$370.00
9 X 7	\$390.00
9 X 8	\$400.00
10 X 8	\$450.00
10 X 10	\$500.00

VINYL WALK-IN DOOR

with Diamond Shaped Window

\$185.00 (34" X 72")

\$200.00 (36" X 72")

\$200.00 (36" X 80") No Window/White

NOTE: Vinyl Doors have framing to step over and open to the outside

METAL SKIN WALK-IN DOOR (WOOD FRAMING, PRIMED)

(No Window/Gray)

\$200.00 (36" X 80")

NOTE: Metal Skin Doors open to the inside

EXTRA PANELS

21' Long \$85.00

26' Long \$100.00

31' Long \$115.00

WINDOWS

30" X 30"

\$150.00

GABLE ENDS

\$275.00 EACH

(UP TO 30' wide)

REGULAR STYLE

NOTE: On **SIDES** roll up doors are \$100.00 additional cost and require legs to be at least **1 ft.** taller than door. Roll up doors on **ENDS** will require legs to be at least **as tall** as roll up door.

VERTICAL A-FRAME STYLE

NOTE: On **SIDES** roll up doors are \$100.00 additional cost and require legs to be at least **2 ft.** taller than door. Roll up doors on **ENDS** will require legs to be at least **1 ft.** taller than door.

EXTRA BOW

\$175.00 with 6' legs
\$10.00 each additional foot in height with purchase of a Carport

NOTE: Roll-Up doors hang 4 to 6 inches.

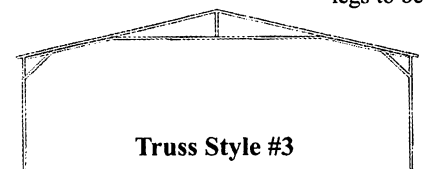
NOTE: When more than 2 Roll-Up doors on 1 side, it requires double framing. Call Office for Price.

NOTE: Call Office for Vertical pricing on sides, end, and engineered buildings.

NOTE: Enclosed structures are **NOT** sealed buildings.

LONGER SIZES AVAILABLE - Call office for prices

Not all structures meet codes. Engineering is at additional cost.



Truss Style #3

Available for Certified Units, Additional Charge